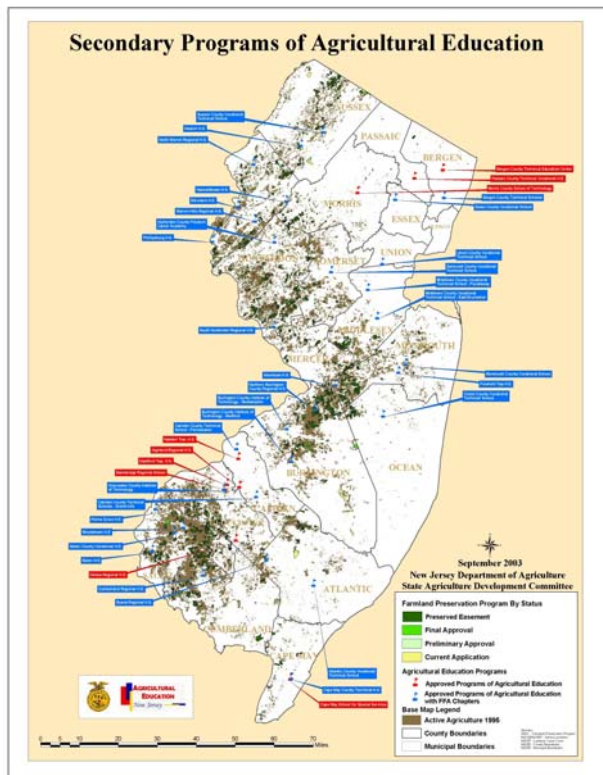


New Jersey Agriculture, Food, and Natural Resources Education

In Cooperation with the New Jersey Department of Education

2011-2012



- Quality programs are comprised of three components
 - Classroom/Lab Instruction
 - Experiential learning (Supervised Agricultural Experience – SAE)
 - Leadership Development (FFA and/or PAS)
 - Serves more than 2,500 students in 41 secondary school districts
 - Over 2,500 members in 35 FFA chapters
 - Over 100 participants per year at National FFA Convention
 - Provides employers with people who are interested in pursuing careers and have the skills to be successful contributors to the workforce
 - Students participate in 28 state level career development events and attend up to 20 leadership development conferences
 - State Advisory Council that reflects industry and education
 - Professional development opportunities for over 50 agriculture teachers
 - Linkages to post-secondary agriculture programs at county colleges and Rutgers, School of Environmental and Biological Sciences encouraging articulation, dual credits and PAS affiliates.
 - Partnership with Rutgers School of Environmental and Biological Sciences Teacher Education program to increase the supply of agriculture teachers
 - Participation in National Curriculum in Agricultural Science Education (CASE) Program
 - State Staff Active on National Boards
 - Teachers recognized by NAAE Awards Program
 - NJ Teacher Certification
- www.state.nj.us/education/educators/license/



Nancy J. Trivette
 Program Leader, Agricultural Education/State FFA Advisor
 Office of Agricultural Education, New Jersey Department of Agriculture
 369 South Warren Street, PO Box 330
 Trenton, NJ 08625
 877-243-3332
nancy.trivette@ag.state.nj.us
www.jerseyageducation.nj.gov